

PRECAUTIONS

1. Never fog near or toward an open flame.
2. Never operate the fogger without the strainer on the end of the liquid intake tube. Both the strainer and the tank should be kept clean.
3. Never block or restrict the air intake ports. The air flow restriction could cause harmful overheating.
4. Never probe into the nozzles with wire or other instruments.
5. Never use fogger for paint or lacquer. It is not designed or suited for such liquids, and such usage will void the warranty.
6. Do not use fogger with wettable powder solutions, ethylene type fumigants or corrosive materials. Fogger should be emptied and cleaned after each use. Periodic cleansing of the whole fogger is recommended. This may be done by running through it 1 quart minimum of a solution of good detergent in hot water followed by a rinse with clear warm water, and finally a flushing with kerosene to protect and lubricate the internal elements. This should definitely be done if fogger is to be out of use for any long period of time.
7. This machine is intended for fogging, water and oil based liquids and should not be used in a close room with materials having a highly inflammable base such as benzene, gasoline, etc.
8. Do not allow fog to be pulled into the intake at the rear of the fogger as damage may occur and void the warranty. When in doubt, use an intake filter.
9. With observance of the foregoing instructions and precautions your Tri-Jet Fogger should give you long, complete and satisfactory performance.

Zep Manufacturing Company
Atlanta, GA

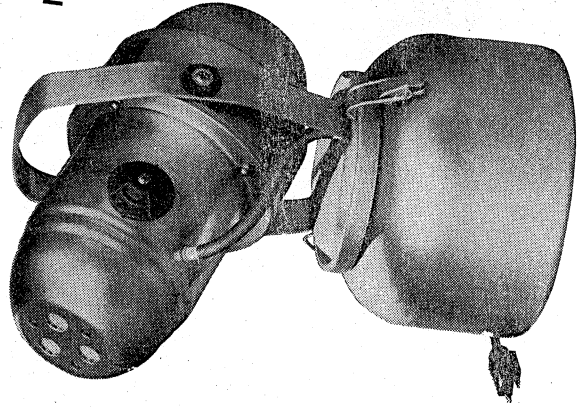
Clean Across America and Throughout The world™

IMPORTANT INFORMATION ABOUT THE

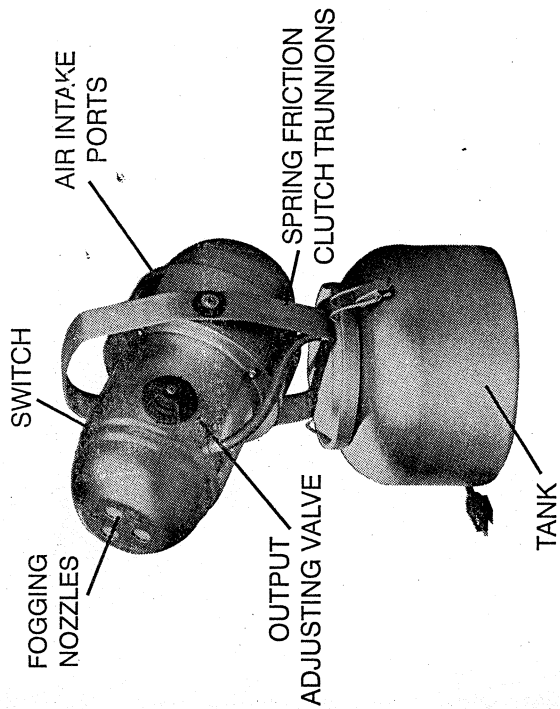
ZEP

ZEP-O-MISTER

MODEL 8320



MODEL 8320

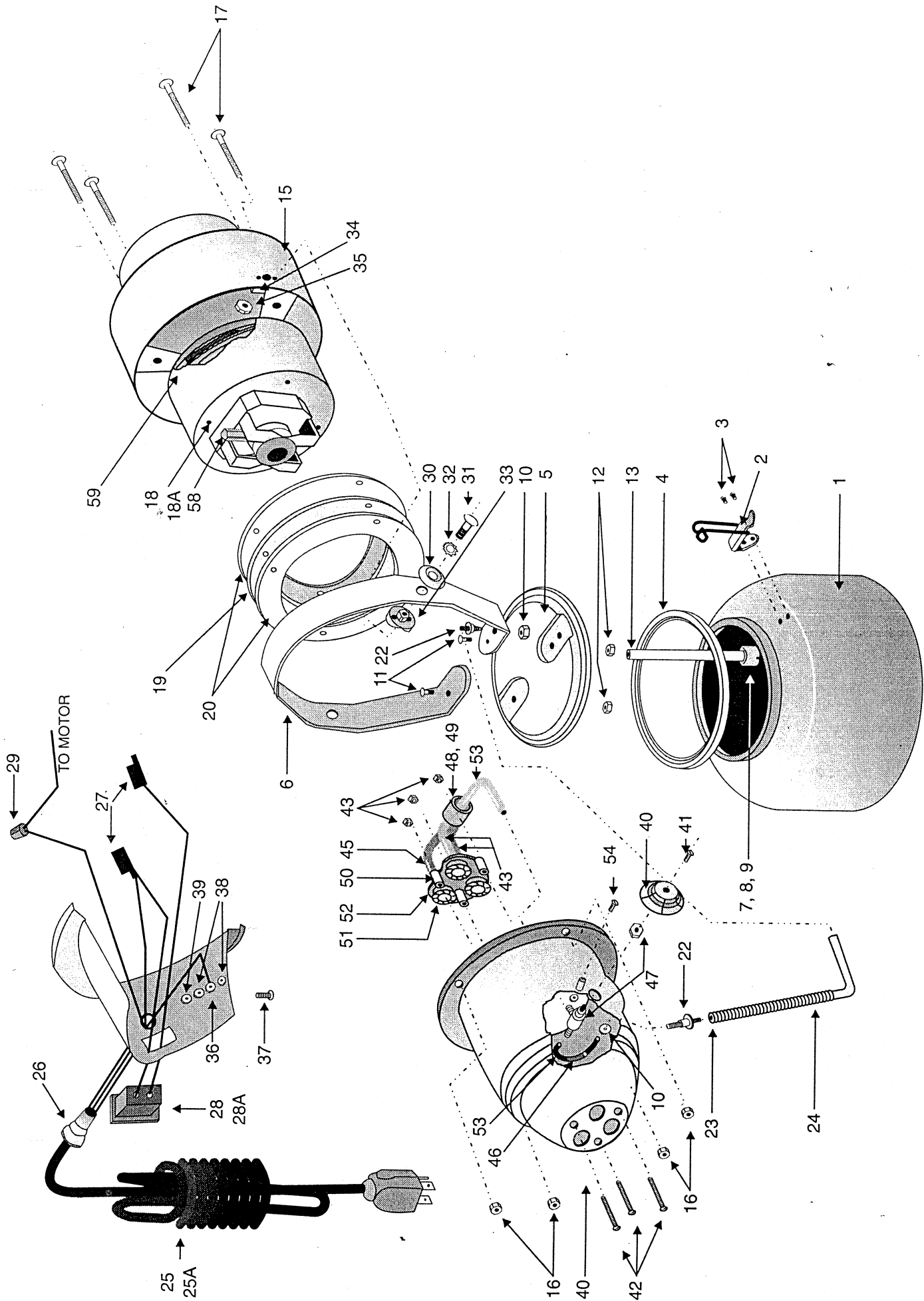


OPERATION

1. Loosen tank clamps by pulling finger tabs upward. Lift power head off tank and set it down on a clean surface, resting it on rear end of housing (nozzle pointing up).
2. Fill tank with not more than 1 gallon of liquid, then replace and reclamp power head on tank. **Be sure strainer is on end of liquid intake tube.**
3. See that switch is in "OFF" position, then plug cord into the correct power outlet.
4. Set output adjusting valve to desired setting.
5. Point nozzle up or down to desired position and move switch to "ON". Fogger will now immediately generate fog.
6. In order to determine the output of the Zep-O-Mister as measured in ounces per minute, follow the calibration instructions located on the fogger.
7. Use of the accessory intake filter will increase motor life.

Your new Zep-O-Mister is designed and built to the highest standards of quality. It mechanically generates fog efficiently and economically without reducing the potency of insecticides, disinfectants or deodorants. It has only one moving part - the motor and fan assembly. This is fully enclosed and secured in the housing and is permanently lubricated. The motor is of universal type, operating on 110 or 220 volts depending on the motor installed.

NOTE: WHEN USING EXTENSION CORD, WIRE SIZE SHOULD BE NO. 12 WIRE MINIMUM.



Effective: 1/1/94
Supersedes: 1/1/93

6208 FOGMASTER TRI-JET®

REPAIR & REPLACEMENT PARTS PRICE LIST & ORDER BLANK

- Ordering Instructions:
1. Enter quantity in appropriate quantity box below.
 2. Check appropriate payment box below.
 3. Complete all shipping information below.
 4. Orders are shipped United Parcel System.

5. Minimum parts order of \$15.00.
6. A new Parts List will be sent with your order.
7. Prices are subject change without notice.
8. Orders shipped outside the 48 contiguous U.S. are charged additional shipping charges. Call for exact amount.

PARTS SOLD IN KITS ONLY

Qty.	Ref. No.	Kit No	Description	Kit Price	Qty.	Ref. No.	Kit No.	Description	Kit Price
<input type="checkbox"/>	1,2,3	050	Tank with Clamps		<input type="checkbox"/>	42,43	207	Venturi Mounting	
<input type="checkbox"/>	2,3	205	Tank Clamp & Rivets		<input type="checkbox"/>	44,45,48,49, 50,51,52,53	208	Venturi Assembly	
<input type="checkbox"/>	7,8,9,13	051	Screen/Wt. Assy. 5"		<input type="checkbox"/>	46,53	209	5" Tube with Non-Kink Spring	
<input type="checkbox"/>	10,22	052	Coupling Assembly		<input type="checkbox"/>	40,41,47,54, 55,56	204	Adjustment Valve (Knob & Hardware)	
<input type="checkbox"/>	10,11,12,22	053	Cover Plate Hardware		<input type="checkbox"/>	10,21,22,25, 26,27,28,29, 36,37,38,39, 40,41,42,43, 45,46,47,48 49,50,51,52, 53,54,55,56	210	Front Housing Assy. 110V	
<input type="checkbox"/>	16,17	206	Housing Hardware		<input type="checkbox"/>		220	Front Housing Assy. 220V	
<input type="checkbox"/>	27,28	054	Switch Assembly (round)						
<input type="checkbox"/>	28A,29	060	Switch Assembly (square)						
<input type="checkbox"/>	30,31,32, 33,34,35	055	Trunion Hardware (one side)						
<input type="checkbox"/>	36,37,38,39	056	Grounding Hardware		<input type="checkbox"/>	5,6,11,12, 14,15,30,31, 32,33,34,35	212	Rear Housing Assy.	
<input type="checkbox"/>	40,41,54,55,56	057	Knob with Mounting Hrdw						
<input type="checkbox"/>	25,27,29	011	Cord Set, 110V 9 Ft.		<input type="checkbox"/>	25A,27,29	012	Cord Set, 220V 9Ft.	

PARTS SOLD SEPARATELY

Qty.	Ref. No.	Part No	Description	Part Price	Qty.	Ref. No.	Part No.	Description	Part Price
<input type="checkbox"/>	4	021	Tank Gasket		<input type="checkbox"/>	21	203	Front Housing	
<input type="checkbox"/>	5	200	Cover Plate		<input type="checkbox"/>	23	024	Tube 8"	
<input type="checkbox"/>	6	201	Trunion Bracket		<input type="checkbox"/>	24	025	Armour Spring	
<input type="checkbox"/>	15	202	Rear Housing		<input type="checkbox"/>	26	026	Strain Relief	
<input type="checkbox"/>	18	215	Motor 110V		<input type="checkbox"/>	58	030	Motor Brushes (pair)	
<input type="checkbox"/>	18A	225	Motor 220V		<input type="checkbox"/>	58A	035	Safety Brush (one)	
<input type="checkbox"/>	19	022	Torque Ring		<input type="checkbox"/>	59	040	Motor Fan Blade (one)	
<input type="checkbox"/>	20	023	Motor Gasket (one)						