

Operating Instructions & Parts Manual for Model 6008

This pump is designed to fit 5, 15, 30 & 55 gallon drums with 3/4" and 2" threaded openings, and also 2-5/8" flexspout openings for 5-gallon pails. The extension tubes included can reach the bottom of a 55 gallon drum. The pump is adjustable to pump 2, 4, 6 or 8 oz per stroke. It has a polypropylene exterior body and polyethylene internal parts. The pump is commonly used for pumping water, water-based liquids and detergents.

Specifications

Flow rate per stroke.	2, 4, 6 or 8 oz	Suction Tube (Length & Material).32" PE
Mounting.5 gal. flex 2-5/8"	Packing Gland.	PE
Inlet.	1/2"	Wetted Parts.	PE & PP
Outlet.	1/2"	Viscosity.	1000 cps
Bung Adapter.	2" & 3/4" PP	Max. Temp.	140°F

General Safety Information

1. Always carefully read, thoroughly understand and follow the pump operating instructions. Use this pump correctly and with care for the purpose for which it is intended. Failure to do so may cause damage or personal injury, and will void the warranty. Please retain instructions for future reference.
2. Contact your chemical or fluid supplier to check for compatibility with pump prior to installation and operation.
3. Prior to use, always carefully and thoroughly read and understand the OSHA information contained in the MSDS sheet supplied for the chemical which is to be pumped.
4. Wear protective clothing (goggles, face mask, long sleeves, long pants, gloves, aprons, etc) as set forth in the OSHA Safety Data Sheet when pumping any hazardous chemicals.
5. When using flammable liquids, pump containers should be grounded to avoid static electricity.
6. Any pump used for transferring flammable liquids must be stored in a ventilated area after use.
7. Pump should be washed out before it is used since processing lubricants may contaminate the fluids.
8. Prior to use, inspect your pump thoroughly verifying its proper assembly.
9. If pump is removed from drum, it should be thoroughly rinsed in a liquid that is compatible with the pump.

Exploded parts view on reverse side

Installation

1. Check to see if all parts are present.
2. Attach discharge spout (Ref. No. 15) using hose clamp (Ref. No. 20).
3. Join two lengths of extension tubing by using tube connector (Ref. No. 17) and two clamps (Ref. No. 20).
4. Attach extension tubing to (Ref. A) and secure with hose clamp (Ref. No. 10).
5. Insert pump into opening and hand tighten.
6. To adjust pump delivery, unscrew top grip (Ref. No. 1) and slide tubing (Ref. No. 9 or Ref. No. 11) over rod to limit pump stroke.
7. For various size drums, tubing (Ref. No. 18) can be cut to fit specific drum.
8. Entire pump head (Ref. No. 4) can be rotated to desired location; when operating the pump, you should stand to the side or in back of the spigot.

PAIL ADAPTER INSTALLATION

1. This adapter (Ref. No. 14) is designed to fit senior (metal ring) flexspout closures.
2. Screw adapter (Ref. No. 14) on male threads at bottom of pump (Ref. No. 13). Tightly secure adapter.
3. Remove cap on FLEXSPOUT closure and remove diaphragm (Ref. B). Insert tube extension into side, then snap over the other side.
4. To remove pump with adapter from pail, pull towards side of pail and snap off making sure to hold pail down.

2. When finished pumping, place cap (Ref. No. 16) on end spout (Ref. No. 15) to prevent dripping.
3. If pump is removed from drum, rinse thoroughly in liquid that is compatible with both the pump and fluid. For questions about chemical compatibility, contact your chemical supplier.

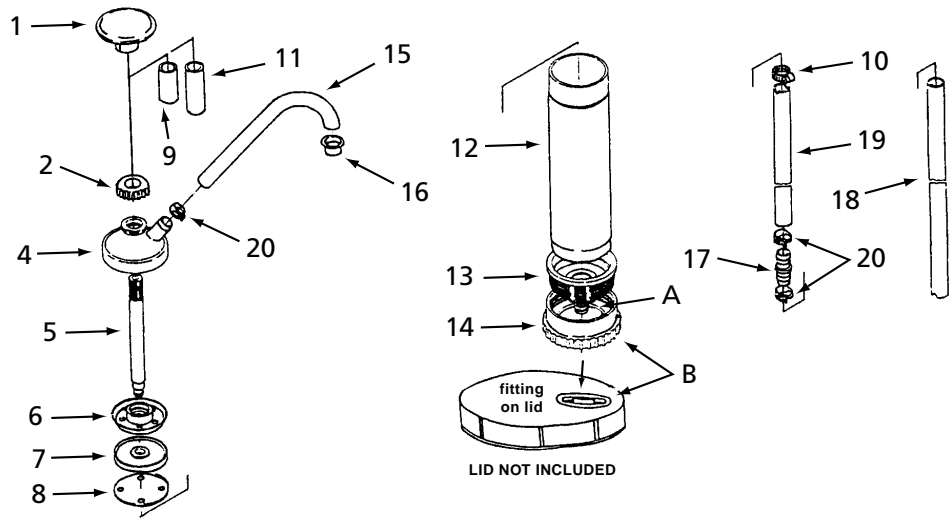
Maintenance

Normal maintenance is not required. If pump leaks at the top replace packing nut.

Operation

1. The pump is now ready for operation. Liquids should begin flowing on second or third upstroke. If slight leakage should occur, simply tighten packing nut (Ref. No. 2) on top of pump.

NOTE: Tighten only enough to prevent leakage.



Replacement Parts List

Ref#	Description	Part
1	Grip	6008-05
2	Packing nut	6008-06
4	Cylinder cap	6008-02
5	Piston rod	6008-07
6	Piston	6008-08
7	Second valve	6008-09
8	First valve	6008-10
9	Restriction clip	6008-19
10	Tube clamp	6008-15
11	Restriction clip	6008-18
12	Cylinder body	6008-01
13	Drum bung	N/A
14	Adapter	6008-258
15	Discharge spout	6008-13
16	Spout cap	6008-20
17	Tube connector	6008-17
18	Dip tube	6008-18
19	Dip tube	6008-19
20	Tube clamps	6008-16